



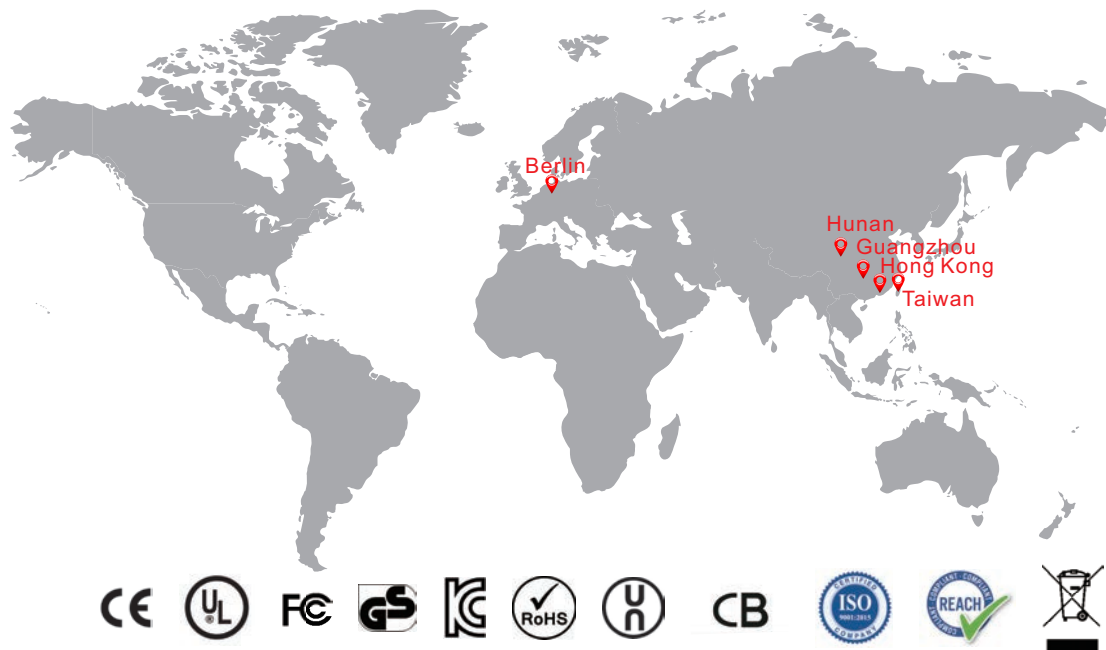
**POWER TO
THE PORTABLE**

PORTAPOWER

www.portapower.com



**2023
Products
Catalog**



PortaPower was founded in Hong Kong in 1995 with a mission of manufacturing and marketing high quality rechargeable batteries and related products for customers worldwide. With branches established in China and Germany, we are able to integrate R&D design, sales and services to satisfy both diverse and specific consumer needs globally. Given our highly efficient production and assembly lines and experienced R&D team, PortaPower continues to stay in the forefront of rechargeable battery technology, while constantly advancing our engineering and manufacturing capabilities to open new frontiers in the energy field.



P03

Cordless Power Tool
Battery Packs



P11

Household Items & Gargen Tool
Battery Packs



P13

Cordless Power Tool Chargers



P14

Battery Cells



P19

E-Bike Wheelchair
Battery Packs & Chargers



P38

External Batteries



P37

Battery Cell with Type C
charging



P34

Digital Camera & Video Camcorder
Battery Packs & Chargers



P33

Universal Laptop AC &
Type C Adapters



P27

Diversified Laptop Computer
Batteries

CONTENTS

CORDLESS POWER TOOLS BATTERY PACKS

We provide compatible power tool battery packs for a wide range of brands available in the market, such as Makita, Milwaukee, Worx, DeWalt, Bosch, Ryobi, Paslode, Panasonic, Hitachi, AEG, Black & Decker, Craftsman, Firestorm, Festool, and National & Skil, etc.

AEG



Voltage: 12V
Capacity: 1400~2000mAh



Voltage: 18V
Capacity: 2800~4000mAh



Voltage: 2.4V
Capacity: 1300~3300mAh



Voltage: 12V
Capacity: 1300~3300mAh



Voltage: 14.4V
Capacity: 1700~2500mAh



Voltage: 18V
Capacity: 1300~3300mAh

HILTI



Voltage: 14.4V
Capacity: 3000~4000mAh



Voltage: 14.4V
Capacity: 3000~4000mAh



Voltage: 21.6V
Capacity: 3000~4000mAh



Voltage: 36V
Capacity: 4500~6000mAh



Voltage: 24V
Capacity: 1900~2500mAh

*All brands, trademarks and registered trademarks are the property of their respective holders.

** Yellow: NI-MH type batteries Green: Li-ion type batteries

PortaPower design features:

- * Designed with cell voltage monitoring mechanism.*
- * Built-in protection IC and NTC to stop battery from being over-charged.*
- * Explosion avoided.*

HITACHI



Voltage: 36V
Capacity: 2700~4000mAh



Voltage: 25.2V
Capacity: 3000~3900mAh



Voltage: 18V
Capacity: 3000~4000mAh



Voltage: 18V
Capacity: 3000~4000mAh



Voltage: 14.4V
Capacity: 1500~2000mAh



Voltage: 24V
Capacity: 1300~3300mAh



Voltage: 18V
Capacity: 1300~3000mAh



Voltage: 14.4V
Capacity: 1500~2400mAh



Voltage: 12V
Capacity: 1200~2000mAh



Voltage: 9.6V
Capacity: 1200~2000mAh

*All brands, trademarks and registered trademarks are the property of their respective holders.

** Yellow: NI-MH type batteries Green: Li-ion type batteries

Makita


Voltage: 36V
Capacity: 2600~3000mAh



Voltage: 18V
Capacity: 3000~4000mAh



Voltage: 14.4V
Capacity: 3000~4000mAh



Voltage: 14.4V
Capacity: 1100~2100mAh



Voltage: 10.8V
Capacity: 1500~2000mAh



Voltage: 7.2V
Capacity: 1100~2100mAh



Voltage: 24V
Capacity: 3200~3300mAh



Voltage: 14.4V
Capacity: 3200~3300mAh



Voltage: 12V
Capacity: 3200~3300mAh



Voltage: 4.8V
Capacity: 1300~2500mAh

*All brands, trademarks and registered trademarks are the property of their respective holders.

** Yellow: NI-MH type batteries Green: Li-ion type batteries



Voltage: 40V
Capacity: 1500~2000mAh



Voltage: 20V
Capacity: 1400~2000mAh



Voltage: 18V
Capacity: 1500~2000mAh



Voltage: 14.4V
Capacity: 1100~2100mAh



Voltage: 12V
Capacity: 1400~2000mAh



Voltage: 24V
Capacity: 1300~3300mAh



Voltage: 18V
Capacity: 1300~3300mAh



Voltage: 14.4V
Capacity: 1200~2000mAh



Voltage: 12V
Capacity: 1200~2000mAh



Voltage: 9.6V
Capacity: 1200~2000mAh

*All brands, trademarks and registered trademarks are the property of their respective holders.

** Yellow: NI-MH type batteries Green: Li-ion type batteries

RYOBI


Voltage: 18V
Capacity: 1100~2100mAh



Voltage: 18V
Capacity: 4000mAh



Voltage: 14.4V
Capacity: 1500~2000mAh



Voltage: 14.4V
Capacity: 1500~2000mAh



Voltage: 12V
Capacity: 1500~2000mAh



Voltage: 10.8V
Capacity: 1500~2000mAh

WORX


Voltage: 40V
Capacity: 1500~2000mAh



Voltage: 18V
Capacity: 1500~2000mAh



Voltage: 18V
Capacity: 3000~4000mAh



Voltage: 12V
Capacity: 1500~2000mAh

*All brands, trademarks and registered trademarks are the property of their respective holders.

** Yellow: NI-MH type batteries Green: Li-ion type batteries



Voltage: 28V
Capacity: 3000~4000mAh



Voltage: 18V
Capacity: 3000~4000mAh



Voltage: 18V
Capacity: 3000~4000mAh



Voltage: 12V
Capacity: 1400~2000mAh



Voltage: 14.4V
Capacity: 1500~2400mAh



Voltage: 12V
Capacity: 1300~3300mAh



Voltage: 12V
Capacity: 1200~2000mAh



Voltage: 9.6V
Capacity: 1300~3300mAh



Voltage: 2.4V
Capacity: 1500~2000mAh

*All brands, trademarks and registered trademarks are the property of their respective holders.

** Yellow: NI-MH type batteries Green: Li-ion type batteries

DEWALT


Voltage: 18V
Capacity: 3000~4000mAh



Voltage: 14.4V
Capacity: 3000~4000mAh



Voltage: 12V
Capacity: 1500~2000mAh



Voltage: 24V
Capacity: 1300~3300mAh



Voltage: 18V
Capacity: 1300~3300mAh



Voltage: 14.4V
Capacity: 1300~3300mAh



Voltage: 12V
Capacity: 1300~3300mAh



Voltage: 9.6V
Capacity: 1300~3300mAh



Voltage: 7.2V
Capacity: 1500~3300mAh

*All brands, trademarks and registered trademarks are the property of their respective holders.

** Yellow: NI-MH type batteries Green: Li-ion type batteries

CRAFTSMAN



Voltage: 20V
Capacity: 2800~4000mAh



Voltage: 19.2V
Capacity: 3000~4000mAh



Voltage: 18V
Capacity: 1300~3300mAh



Voltage: 18V
Capacity: 1300~3300mAh



Voltage: 14.4V
Capacity: 1300~3300mAh



Voltage: 12V
Capacity: 1300~3300mAh



Voltage: 12V
Capacity: 1300~3300mAh



Voltage: 9.6V
Capacity: 1300~3300mAh



Voltage: 7.2V
Capacity: 1300~3300mAh

*All brands, trademarks and registered trademarks are the property of their respective holders.

** Yellow: NI-MH type batteries Green: Li-ion type batteries

HOUSEHOLD ITEMS & GARGEN TOOL BATTERY PACKS

dyson



Fit model: Dyson DC16
Voltage: 21.6V
Capacity: 2000mAh



Fit model: Dyson V6
Voltage: 21.6V
Capacity: 3300mAh



Fit model: Dyson V7
Voltage: 21.6V
Capacity: 2500mAh



Fit model: Dyson V8
Voltage: 21.6V
Capacity: 4000mAh



Fit model: Dyson V8
Voltage: 21.6V
Capacity: 5000mAh



Fit model: Dyson V10
Voltage: 25.2V
Capacity: 3000mAh



Fit model: Dyson V11 FLUFFY EXTRA
Voltage: 25.2V
Capacity: 3600~3900mAh

iRobot



Fit model: Roomba 440
Voltage: 14.4V
Capacity: 3300mAh



Fit model: Roomba 500 / 600 / 700
Voltage: 14.4V
Capacity: 3300mAh

neato
robotics®



Fit model: D80
Voltage: 12V
Capacity: 3000mAh



Fit model: XV-25
Voltage: 7.2V
Capacity: 3000mAh

*All brands, trademarks and registered trademarks are the property of their respective holders.

More capacity Selections available

indream®



Fit model: Indream 9700 / 9300 / 9200
Voltage: 14.4V
Capacity: 3300mAh

greenworks®



Fit model: G40LM35K40v Cordless
Voltage: 36V
Capacity: 2500mAh



Fit model: G40LM35K40v Cordless
Voltage: 36V
Capacity: 5000mAh

GARDENA®



Fit model: Smart Sileno City9676473-03
Voltage: 18.5V
Capacity: 2500mAh



Fit model: 9825 / ComfortCut Li-18 / 23R
Voltage: 18V
Capacity: 2500mAh

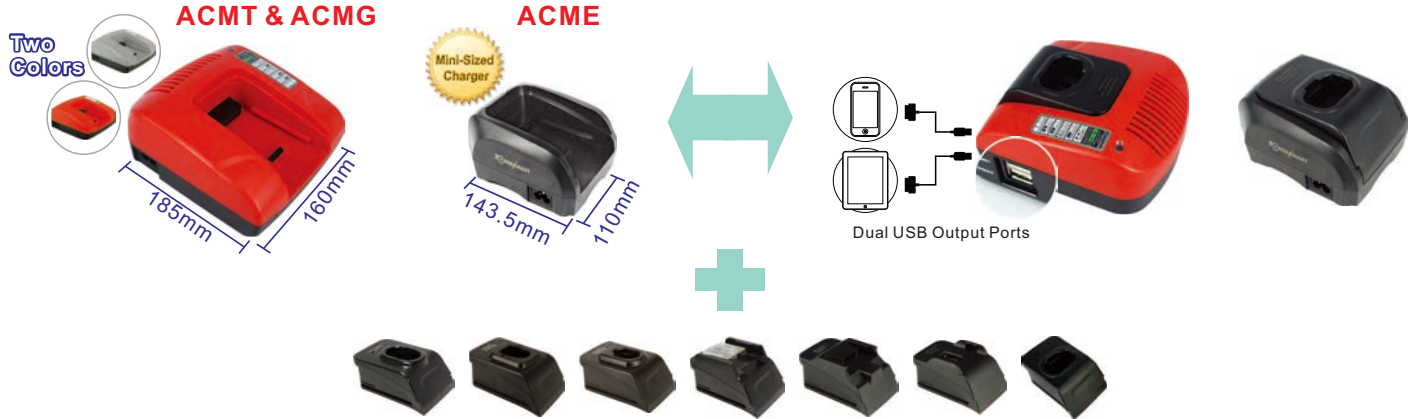


Fit model: Gardena 124562
Voltage: 18V
Capacity: 2500mAh

*All brands, trademarks and registered trademarks are the property of their respective holders.

CORDLESS POWER TOOL CHARGERS

Fit for both Ni-Cd / Ni-MH & Li-ion Power Tool Batteries



We provide a broad range of interchangeable charger plates
Over 95% power tool battery charger plates available

Specifications :

Model	ACMT	ACMG	ACME
Input	100-240V / 1.2A Max.		
Output	7.2V - 25V / 3A Max.	21.6V - 36V / 2.1A Max.	7.2V - 18V / 1.5A Max.

- * Fit for Ni-Cd/Ni-MH & Li-ion Power Tool Batteries
- * Interchangeable plates to suit different battery models, simply change the charger plates
- * Cover 90% Power Tool battery models

BATTERY CELLS

YLK LIK ENERGY (YLE) - a subsidiary of PortaPower Group



Model: INR16300A75 A
Chemistry: Li-NMC
Nominal Voltage: 3.6V
Typical Capacity: 750 mAh
Continuous Current: 2.5A



Model: NCR18350A140 A
Chemistry: Li-NMC
Nominal Voltage: 3.6V
Typical Capacity: 1400 mAh
Continuous Current: 3A



Model: NCR14500A125 A
Chemistry: Li-NMC
Nominal Voltage: 3.6V
Typical Capacity: 1250 mAh
Continuous Current: 2.5A



Model: NCR18350D125 DT
Chemistry: Li-NMC
Nominal Voltage: 3.6V
Typical Capacity: 1250 mAh
Continuous Current: 3A



Model: NCR14430A115 A
Chemistry: Li-NMC
Nominal Voltage: 3.6V
Typical Capacity: 1150 mAh
Continuous Current: 2.5A



Model: NCR18500A240 A
Chemistry: Li-NMC
Nominal Voltage: 3.6V
Typical Capacity: 2400 mAh
Continuous Current: 5A

YLE manufactures high quality Li-NMC cells which can be used in the making of battery packs for eBikes, LED Lightings, Household Appliances and many other devices.

Battery cells of different capacity available



Model: INR18650D260 D
Chemistry: Li-NMC
Nominal Voltage: 3.6V
Typical Capacity: 2600 mAh
Continuous Current: 10A



Model: NCR18650A300 A
Chemistry: Li-NCA
Nominal Voltage: 3.6V
Typical Capacity: 3000 mAh
Continuous Current: 6A



Model: NCR18650D290 D
Chemistry: Li-NCA
Nominal Voltage: 3.6V
Typical Capacity: 2900 mAh
Continuous Current: 10A



Model: NCR18650A335 A
Chemistry: Li-NCA
Nominal Voltage: 3.6V
Typical Capacity: 3350 mAh
Continuous Current: 6A



Model: NCR18650D320 D
Chemistry: Li-NCA
Nominal Voltage: 3.6V
Typical Capacity: 3200 mAh
Continuous Current: 10A



Model: NCR18650D350 D
Chemistry: Li-NCA
Nominal Voltage: 3.6V
Typical Capacity: 3450 mAh
Continuous Current: 10A



Model: INR18650D250 G6
Chemistry: Li-NMC
Nominal Voltage: 3.6V
Typical Capacity: 2500mAh
Continuous Current: 22A



Model: NCR18650 36 D3
Chemistry: Li-NMC
Nominal Voltage: 3.6V
Typical Capacity: 3600mAh
Continuous Current: 10A



Model: IFR26650D420 D
Chemistry: Li-NMC
Nominal Voltage: 3.2V
Typical Capacity: 4200mAh
Continuous Current: 8A



Model: NCR18650A320 A
Chemistry: Li-NMC
Nominal Voltage: 3.6V
Typical Capacity: 3200mAh
Continuous Current: 6A



Model: NCR26650D600 DT
Chemistry: Li-NMC
Nominal Voltage: 3.6V
Typical Capacity: 6000mAh
Continuous Current: 10A



Model: NCR21700D500 DT
Chemistry: Li-NMC
Nominal Voltage: 3.6V
Typical Capacity: 5000mAh
Continuous Current: 10A

We are the Authorized Assembler of Samsung high power consumption battery packs.



Model: ICR18650-26J M
Chemistry: Li-ion
Nominal Voltage: 3.6V
Typical Capacity: 2600mAh
Continuous Current: 5.2A



Model: INR18650-30Q
Chemistry: Li-ion
Nominal Voltage: 3.6V
Typical Capacity: 3000mAh
Continuous Current: 6A



Model: INR18650-35E
Chemistry: Li-ion
Nominal Voltage: 3.6V
Typical Capacity: 3350mAh
Continuous Current: 8A



Model: INR21700-50E
Chemistry: Li-ion
Nominal Voltage: 3.6V
Typical Capacity: 4900mAh
Continuous Current: 9.8A

We are the Authorized Assembler of Panasonic high power consumption battery packs.



Model: UR18650AA
Chemistry: Li-ion
Nominal Voltage: 3.6V
Typical Capacity: 2250mAh
Continuous Current: 5A



Model: NCR18650GA
Chemistry: Li-NCA
Nominal Voltage: 3.6V
Typical Capacity: 3450mAh
Continuous Current: 10A



Model: NCR18650BD
Chemistry: Li-NCA
Nominal Voltage: 3.6V
Typical Capacity: 3180mAh
Continuous Current: 10A

E-BIKE WHEELCHAIR BATTERY PACKS & CHARGERS

In-frame



Black Warrior | YL-TXW1



Dragon | YL-TSL1



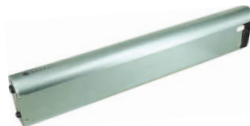
Electric Eel | YL-TDM1



Eagle | YL-THY1



Lion | YL-TXS1



Phoenix | YL-TFH1



Panther | YL-THB1



Razer | YL-TLS1



Rosefinch | YL-TZQ1



Sword | YL-TBJ1



Unicorn | YL-TDJ1



Wolf | YL-THL1



Blade | SS-TLR1

Down Tube



Grasshopper I YL-DCM1



Wasp I YL-DHF1



Hailong I SS-DHL1



Sea Moon I SS-DHY1



Sharp I SS-DXP1



Polly IV RE-DYW4M



Tiger Shark I RE-DHS1



Rear Carrier



Blizzard I YL-CFX1



Blue Sky I YL-CLT1



Breeze I YL-CWF1



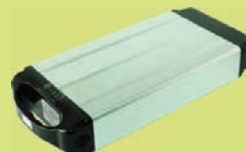
Lightning I YL-CSD1



Matsushita II YL-CSX2



Thunderstorm I YL-CLY1



White Cloud I YL-CBY1



Hai Tian I SS-CHT1



Hai Ying IV SS-CHY4



Apollo I KN-CAP1



N115 I KN-CCB1



Multi-fit



Blue Whale I YL-MLJ1



Coral I YL-MSH1



Jellyfish I YL-MSM1



Sea Turtle I YL-MHG1



Seahorse I YL-MHM1

Welding



Clipping



with Controller Box Base



Seat Post



Whitebait I YL-SYY1



Starfish II SS-SHX2



Water Bottle



Dragonfly I YL-WXQ1



Scarab I YL-WJG1



Sky Bull I YL-WTN1



Train II SS-WDC2



Cuttle-1C RE-WHT1C



Extra Space for controller



Specifications: Choice of 7 different input plugs for AC chargers



American Type



Australian Type



British Type



European Type



Israel Type



Japanese Type



Switzerland Type

Specifications: Choice of 7 different DC output plugs



Z (DC2.1)
inner dia 2.1mm



Y (4-PIN PAJ)
outer dia 12.6mm



X (3-PIN XRL)
inner dia 16mm



W (3-PIN PAJ)
outer dia 12.6mm



V (5-PIN PAJ)
outer dia 12.6mm



U (DC 2.5)
inner dia 2.5mm



T (DC 3.0)
inner dia 3.0mm



40W Chargers

Model	CPF040715
Battery Voltage	24V
AC Input	100 - 240V
Frequency	50Hz / 60Hz
DC Output	29.4V
Charging Current	Max. 1.5A
Efficiency (Full load)	≥ 85%
Weight	Approx. 186.8g
Dimensions	102.5 (L) x 50.5 (W) x 31.3 (H) mm Length of DC output: 1.0M



60W Chargers

Model	CPF061015
Battery Voltage	36V
AC Input	100 - 240V
Frequency	50Hz / 60Hz
DC Output	42V
Charging Current	Max. 1.5A
Efficiency (Full load)	≥ 83%
Weight	Approx. 222g
Dimensions	110.5 (L) x 55 (W) x 32 (H) mm Length of DC output: 1.0M



60W Chargers

Model	CTF060720
Battery Voltage	24V
AC Input	100 - 240V
Frequency	50Hz / 60Hz
DC Output	29.4V
Charging Current	Max. 2A
Efficiency (Full load)	≥ 85%
Weight	Approx. 242g
Dimensions	111 (L) x 51.3 (W) x 33.8 (H) mm Length of DC output: 1.0M



80W Chargers

Model	CTF081020
Battery Voltage	36V
AC Input	100 - 240V
Frequency	50Hz / 60Hz
DC Output	42V
Charging Current	Max. 2A
Efficiency (Full load)	≥ 85%
Weight	Approx. 316g
Dimensions	141.2 (L) x 60.5 (W) x 33.6 (H) mm Length of DC output: 1.2M



80W Chargers

Model	CPF081020
Battery Voltage	36V
AC Input	100 - 240V
Frequency	50Hz / 60Hz
DC Output	42V
Charging Current	Max. 2A
Efficiency (Full load)	≥ 85%
Weight	Approx. 320g
Dimensions	141 (L) x 61 (W) x 34.5 (H) mm Length of DC output: 1.2M



80W Chargers

Model	CMM081020
Battery Voltage	36V
AC Input	100 - 240V
Frequency	50Hz / 60Hz
DC Output	42V
Charging Current	Max. 2A
Efficiency (Full load)	≥ 84%
Weight	Approx. 365g
Dimensions	147 (L) x 65.5 (W) x 34.2 (H) mm Length of DC output: 1.2M



100W Chargers

Model	CPF101320
Battery Voltage	48V
AC Input	100 - 240V
Frequency	50Hz / 60Hz
DC Output	54.6V
Charging Current	Max. 2A
Efficiency (Full load)	≥ 88%
Weight	Approx. 483g
Dimensions	172.2 (L) x 72.8 (W) x 36.5 (H) mm Length of DC output: 1.2M

130W Chargers

Model	CPF131030
Battery Voltage	36V
AC Input	100 - 240V
Frequency	50Hz / 60Hz
DC Output	42V
Charging Current	Max. 3A
Efficiency (Full load)	≥ 87%
Weight	Approx. 605g
Dimensions	174 (L) x 83 (W) x 36.3 (H) mm Length of DC output: 1.2M



130W Chargers

Model	CPN131030
Battery Voltage	36V
AC Input	100 - 240V
Frequency	50Hz / 60Hz
DC Output	42V
Charging Current	Max. 3A
Efficiency (Full load)	≥ 87%
Weight	Approx. 605g
Dimensions	174 (L) x 83 (W) x 36.3 (H) mm Length of DC output: 1.2M



160W Chargers

Model	CMM161040	CMM161330
Battery Voltage	36V	48V
AC Input	100 - 240V	
Frequency	50Hz / 60Hz	
DC Output	42V	54.6V
Charging Current	Max. 4A	Max. 3A
Efficiency (Full load)	≥ 85%	
Weight	Approx. 316g	
Dimensions	179 (L) x 80 (W) x 37.2 (H) mm Length of DC output: 1.2M	



160W Chargers

Model	CPF161040	CPF161330
Battery Voltage	36V	48V
AC Input	100 - 240V	
Frequency	50Hz / 60Hz	
DC Output	42V	54.6V
Charging Current	Max. 4A	Max. 3A
Efficiency (Full load)	≥ 85%	
Weight	Approx. 320g	
Dimensions	182 (L) x 79 (W) x 42 (H) mm Length of DC output: 1.5M	



220W Chargers

Model	CFF221050	CFF221340
Battery Voltage	36V	48V
AC Input	100 - 240V	
Frequency	50Hz / 60Hz	
DC Output	42V	54.6V
Charging Current	Max. 5A	Max. 4A
Efficiency (Full load)	≥ 88%	
Weight	Approx. 687g	Approx. 700g
Dimensions	182 (L) x 86.5 (W) x 46.6 (H) mm Length of DC output: 1.2M	



250W Chargers

Model	CMM251060
Battery Voltage	36V
AC Input	100 - 240V
Frequency	50Hz / 60Hz
DC Output	42V
Charging Current	Max. 6A
Efficiency (Full load)	> 87%
Weight	Approx. 316g
Dimensions	220 (L) x 105.8 (W) x 48.3 (H) mm Length of DC output: 1.2M



250W Chargers

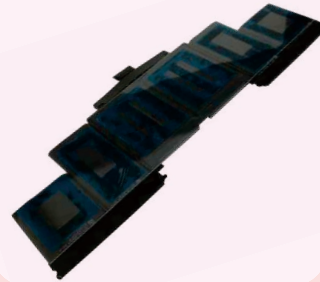
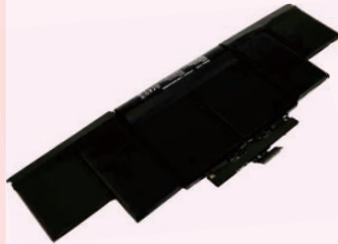
Model	CPN251060
Battery Voltage	36V
AC Input	100 - 240V
Frequency	50Hz / 60Hz
DC Output	42V
Charging Current	Max. 6A
Efficiency (Full load)	≥ 90%
Weight	Approx. 900g
Dimensions	196 (L) x 99 (W) x 40.5 (H) mm Length of DC output: 1.2M



300W Chargers

Model	CPC301070
Battery Voltage	36V
AC Input	100 - 240V
Frequency	50Hz / 60Hz
DC Output	42V
Charging Current	Max. 7A
Efficiency (Full load)	≥ 84%
Weight	Approx. 981g
Dimensions	185 (L) x 90 (W) x 42.5 (H) mm Length of DC output: 1.0M

DIVERSIFIED LAPTOP COMPUTER BATTERIES



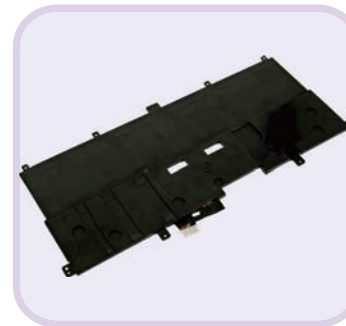
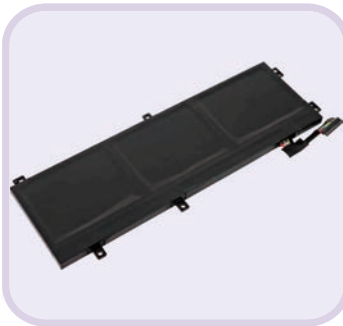
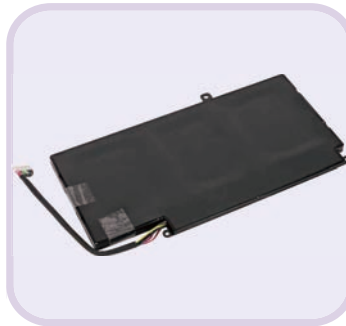
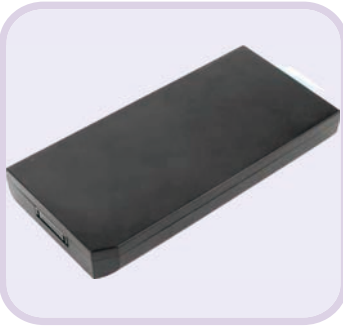
ASUS®



*All brands, trademarks and registered trademarks are the property of their respective holders.

We provide choices for a broad range of brands: Acer, Apple, Asus, Dell, LG, Compaq, Fujitsu, Gateway, Sony, Lenovo, Samsung, MSI, Panasonic, Toshiba, HP, and IBM, etc.

28



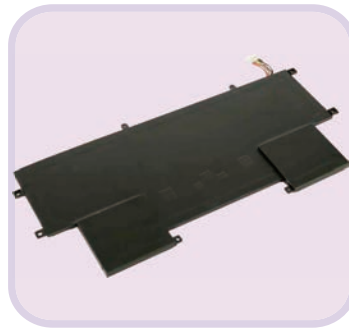
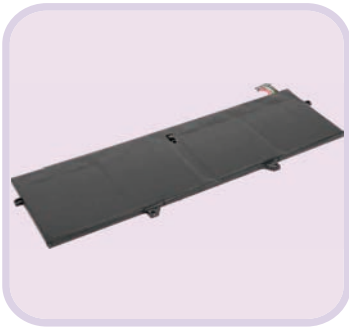
*All brands, trademarks and registered trademarks are the property of their respective holders.

lenovo

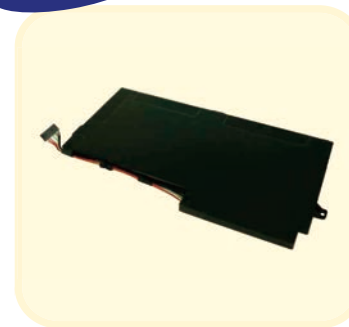
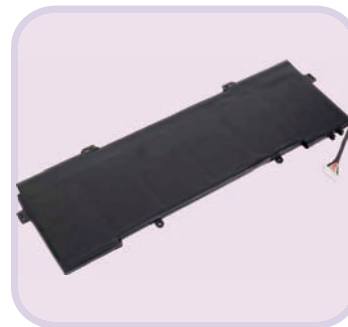
*All brands, trademarks and registered trademarks are the property of their respective holders.

We provide choices for a broad range of brands: Acer, Apple, Asus, Dell, LG, Compaq, Fujitsu, Gateway, Sony, Lenovo, Samsung, MSI, Panasonic, Toshiba, HP, and IBM, etc.

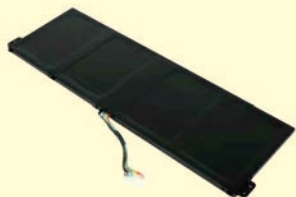
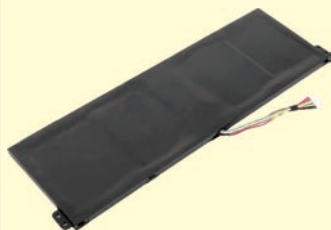
30



SAMSUNG



*All brands, trademarks and registered trademarks are the property of their respective holders.

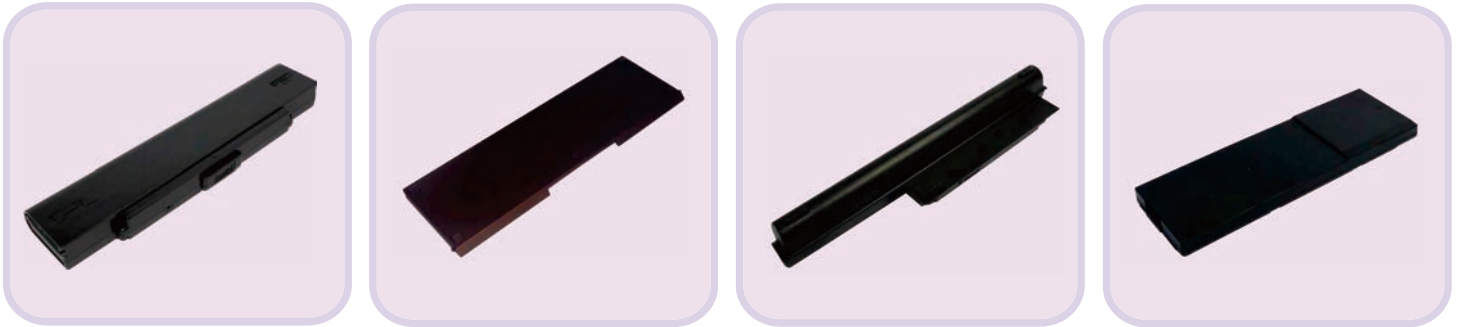
FUJITSU**acer****TOSHIBA**

*All brands, trademarks and registered trademarks are the property of their respective holders.

We provide choices for a broad range of brands: Acer, Apple, Asus, Dell, LG, Compaq, Fujitsu, Gateway, Sony, Lenovo, Samsung, MSI, Panasonic, Toshiba, HP, and IBM, etc.

32

SONY



Panasonic
ideas for life

 **LG**

DURACELL



*All brands, trademarks and registered trademarks are the property of their respective holders.

UNIVERSAL LAPTOP AC & TYPE C ADAPTERS

AC Adapter

We provide 38 kinds of Interchangeable connector tip for customers to choose with.
 - Select a suitable connector tip and fit into the laptop DC-in jack tightly and steadily.
 Then connect the DC output of the Power Adapters.



Tip for MacBook



**19V / 4.74A
90W**



58.5 x 34.5 x 134mm

**16V / 4.06A
65W**



95.4 x 42.3 x 30.4mm

**19V / 2.36A
45W**



90.6 x 35.0 x 26mm

Type C Adapter 60W USB-C PD3.0 Charger



American



European



Australian



British

**Input: 100 - 240V / Max 1.3A
Output: 5 - 20V / Max.1.2A**

DIGITAL CAMERA & VIDEO CAMCORDER BATTERY PACKS & CHARGERS

BATTERY PACKS



Fit model: **SONY**
Voltage: 3.8V
Capacity: 2040, 2280mAh



Fit model: **Panasonic**
Voltage: 7.4V
Capacity: 3500mAh



Fit model: **Canon**
Voltage: 7.4V
Capacity: 750mAh



Fit model: **Nikon**
Voltage: 3.7V
Capacity: 980mAh



Fit model: **Fujifilm**
Voltage: 7.2V
Capacity: 850, 1100mAh



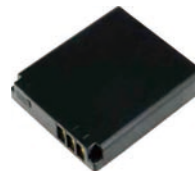
Fit model: **GoPro Fusion**
Voltage: 3.8V
Capacity: 2620mAh



Fit model: **Olympus**
Voltage: 3.7V
Capacity: 620mAh



Fit model: **Insta360**
Voltage: 3.8V
Capacity: 1200mAh



Fit model: **Samsung**
Voltage: 3.7V
Capacity: 1100mAh



Fit model: **Pentax**
Voltage: 7.4V
Capacity: 2050, 2200, 2300, 2600mAh



Fit model: **DJI**
Voltage: 3.85V
Capacity: 1300mAh

*All brands, trademarks and registered trademarks are the property of their respective holders.

CHARGERS



Package includes



Charger
Base



Charger
Plate



USB Power
Cable

AVET Series

For 7.2~8.4V

Specifications:

Input: DC 5V / 1A

Output: DC 8.4V / 1A

Dimension: 86 x 49 x 24mm

USB Dual Charge

Specifications:

Input: DC 5V / 1-2A

Output: DC 4.2V / 8.4V 0.6A*2

Dimension: 85 x 54 x 23mm



USB Charger For

Canon LP-E10, Fuji VP-W126, Nikon EN-EL15,
Sony NP-FZ100, Sony NP-FW50, Sony NP-BX1

Convenient Design
Automatic Positive (+) and Negative (-)
Fit for different battery sizes



AVEQ Series

For 3.6~4.2V

Specifications:

Input: DC 5V / 1A

Output: DC 4.2V / 1A

Dimension: 79 x 47 x 22mm

Features

- Slim & Portable Size
- Powered by USB port
- Interchangeable Charger Plates



*All brands, trademarks and registered trademarks are the property of their respective holders.

CHARGERS

36

AVMP Series

Specifications:

Input:

100 - 240V; 50 / 60Hz

Output:

DC 12V / 1A

Charger DC Output:

DC 4.2V / 8.4V

Dimensions:

106 x 68 x 35mm



Features

- Interchangeable Charger Plates
- Charger come with 2 power adaptors, allow you to charge your battery at home or in car
- Select 1 of 4 optional AC power Adaptors



ACMPB Series

Specifications:

Input:

100 - 240V; 50 / 60Hz

Output:

DC 4.2V / 8.4V

Dimensions:

80 x 48 x 28mm



Features

- Direct plug into the wall outlet
- Interchangeable Charger Plates
- Interchangeable Adaptor Plates, design for worldwide applications



*All brands, trademarks and registered trademarks are the property of their respective holders.

Battery Cell with Type C charging

Batteries are provided with reliable built-in safety Protection Circuit Modules (PCM) to protect against Over Charge, Over Discharge, Overload and Under Voltage

FLU1410 520mAh/1.9Wh



Li-ion 3.6V
Size: 32.5 x Ø14.6mm
Output: **1A**
USB Charging Current: 5V/0.4A
Built-in protection circuit

FLU1411 750mAh/2.7Wh



Li-ion 3.6V
Size: 50.5 x Ø14.6mm
Output: **3A**
USB Charging Current: 5V/0.4A
Built-in protection circuit

FLU1812 1700mAh/6.1Wh



Li-ion 3.6V
Size: 57 x Ø18.8mm
Output: **2.5A**
USB Charging Current: 5V/0.6A
Built-in protection circuit

FLU1610U 850mAh 3.05Wh



Li-ion 3.6V
Size: 16.6 X 35
Output: **3.5A**
USB Charging Current: 5V/0.4A

FLU2112 1150mAh 2.76Wh Replaced AA



Li-ion 3.6V
Output Capacity 1.5V
Output Current: 2A
USB Charging Current: 5V/0.4A
Output capacity calculated by 3.6V x 1150mAh/1.5V

FLU1810 1100mAh/4.0Wh



Li-ion 3.6V
Size: 42 x Ø18.8mm
Output: **8A**
USB Charging Current: 5V/0.6A
Built-in protection circuit

FLU2111 4000mAh/14.4Wh



Li-ion 3.6V
Size: 76.5 x Ø21.8mm
Output: **20A**
USB Charging Current: 5V/1.5A
Built-in protection circuit

FLU1611 950mAh 1.14Wh Replaced CR123A



Li-ion 3.6V
Output Capacity 3V
Output Current: 2A
USB Charging Current: 5V/0.4A
Output capacity calculated by 3.6V x 950mAh/3V

FLU1815 2000mAh/7.2Wh



Li-ion 3.6V
Size: 66 x Ø18.8mm
Output: **3A**
USB Charging Current: 5V/0.6A
Built-in protection circuit

FLU1819 3500mAh/12.6Wh



Li-ion 3.6V
Size: 72 x Ø18.8mm
Output: **8A**
USB Charging Current: 5V/0.6A
Built-in protection circuit

FLU2611 5000mAh/18Wh



Li-ion 3.6V
Size: 72 x Ø26.8mm
Output: **10A**
USB Charging Current: 5V/1.5A
Built-in protection circuit

EXTERNAL BATTERIES

TRAVEL SERIES

Model EL1697 Max. 31500 mAh



4 Colors : Pink, Green, Blue & Gray

Specifications:

Model	EL1697	
Input	DC12V-24V	
Output	1	16V = 4A / 19V = 3.5A / 24V = 2.5A
	2	5V = 1A
	3	5V = 2.1A
	4	10.8V = 5A
Size	177 x 110 x 23 mm	
Capacity	27000 mAh	
Cell	Panasonic NCR18650GA x 9	

Package Includes



Connectors for Laptop



Connectors for Mobile Phone



AC Adapter (19V / 45W)



Travel Bag

PROFESSIONAL SERIES

Model EL1901 Max. 63000 mAh



Designed for Laptop

Specifications:

Model	EL1901
Rated Input	DC 12-19V
Selectable Output	DC 16V or 19V 4.75A Max.
USB Output	DC 5V / 2A
Size	270 x 145 x 33 mm
Capacity	63000 mAh
Cell	Panasonic NCR18650GA x 18

*All brands, trademarks and registered trademarks are the property of their respective holders.

Automation — Mechanization — Informatization — Intelligence

YOUR ENERGY SOLUTION PROVIDER

HONG KONG HEADQUARTER:

PORTAPOWER (China) Limited

Flat 1003, 10/F., Hopeful Factory Centre,
10-16 Wo Shing St., Fotan, N.T., Hong Kong

Tel: (852) 2687 6323

Fax: (852) 2687 6312

GUANGDDONG FACTORY:

Guangzhou Zhanhui Electronics Co., Ltd

No. 320, Shinan Road, Guantan, Dongchong,
Nansha District, Guangzhou, China, 511453

Tel: (86) 020-6680 4228

Fax: (86) 020-6680 4229

HUNAN FACTORY:

Changde Yik Lik Energy Ltd.

Anxiang County Industrial Area,
Changde City, Hunan, China, 415600

Tel: (86) 0736-433 8338

Fax: (86) 0736-433 8333

SERVICE CENTRE:

PORTAPOWER Service Center

Alt-Kaulsdorf 18
12621 Berlin, Germany

Tel: +49 (0)30 60985356

TAIWAN FACTORY:

PORTAPOWER Electronics Ltd.

1/F, No.79, Ln.271, Liancun Rd., Fengyuan Dist.,
Taichung City, Taiwan (R.O.C), 420

Tel: +886-4 2539 3829

Fax: +886-4 2539 3829